

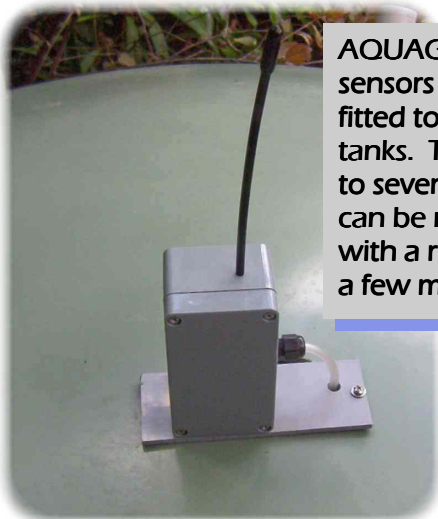
# AQUAGAUGE

Product Update

Revised Nov 2007

## MEASURE LIQUID LEVEL WITH WIRELESS PRESSURE SENSOR

AQUAGAUGE™ sensors provide an inexpensive method of continuous level measurement in a variety of aqueous liquids including rainwater, seawater, wine, process solutions, etc. Typical uses include water tanks, industrial storage tanks, chemical reactors,



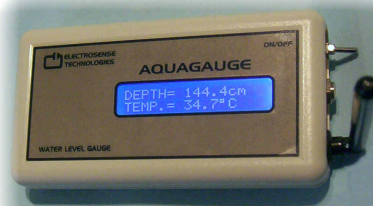
AQUAGAUGE sensors can easily be fitted to rainwater tanks. Tank depths to several meters can be measured with a resolution of a few mm.

bilges, irrigation channels, reservoirs, lakes, rivers, seawater etc. The product range encompasses a variety of models including systems with wireless and data-logging capabilities.

Wireless range is up to 0.5 km line-of-sight with battery powered receiver and transmitter. Systems can easily be moved from

site-to-site for temporary monitoring purposes. The units are robust, simple to install, require little maintenance and offer an unbeatable performance to price ratio. Differential pressure method uses hydrostatic pressure calibrated against water depth. Changes in atmospheric pressure are compensated by use of a vent tube.

Data transmission is by radio frequency to a portable LCD receiver.



### Sensor Specifications

Wireless data transmission.

Complies with low interference potential RF class licence.

Transmitter unit sealed against dust and water.

External temperature monitored to a resolution of 0.1 °C

Inert materials in contact with liquid.

Depth ranges 0-2.5 m, 0-5 m, 0-10 m, 0-30 m

Water level accuracy ±2 cm

### Optional data logging and monitoring features

- Serial data output port.
- Windows PC logging and charting software.
- PC serial cable.
- Data logging unit with non volatile 32k sample memory.

Electrosense Technologies Pty. Ltd.  
Darebin Enterprise Center  
Postal Address:  
PO Box 948  
Templestowe, Victoria 3106

Phone: 03 9846 1510  
Mobile: 0407 461518  
Fax: 03 9846 5056  
Email: info@electrosense.com.au  
URL: www.electrosense.com.au

## AQUALOGGER PC SOFTWARE

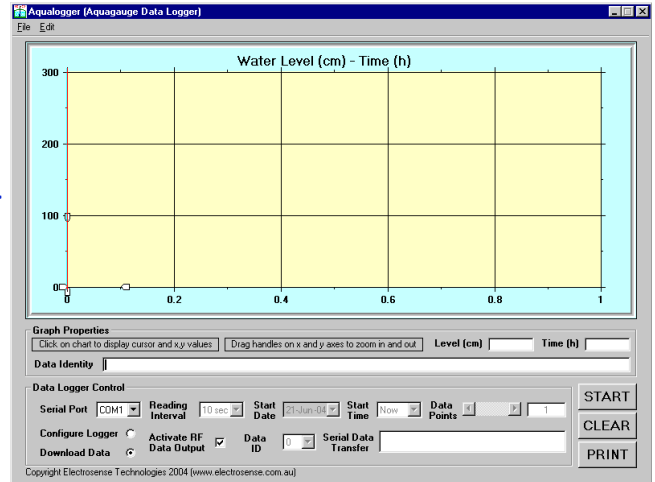
Our AG-RFLOG water level data logging model requires AQUALOGGER software for serial port setup, data download and data display. Sampling interval may be varied from a few seconds to several hours with an initial delay ranging from zero seconds to several months. Up to 32k samples can be saved and the inbuilt RF data transmitter can be enabled or disabled at setup time. The software is supplied on CD and the

*“Up to 32k samples can be saved and the inbuilt RF data transmitter can be enabled or disabled at setup time.”*

PC operating system must be Windows 95 or higher.

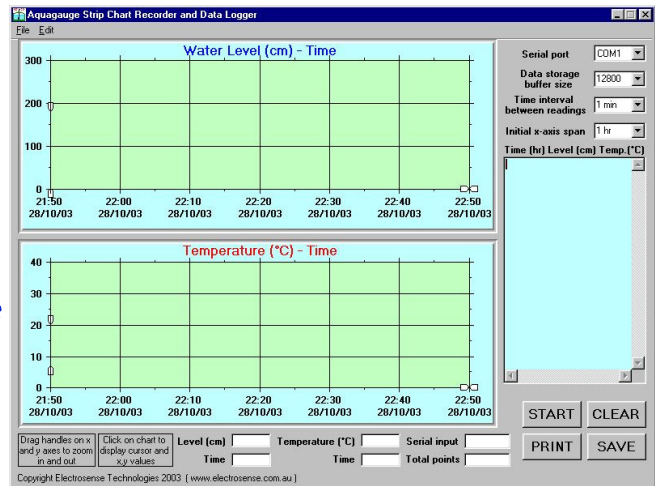
A description of the main features of the software

can be downloaded from our web pages at [www.electrosense.com.au](http://www.electrosense.com.au)

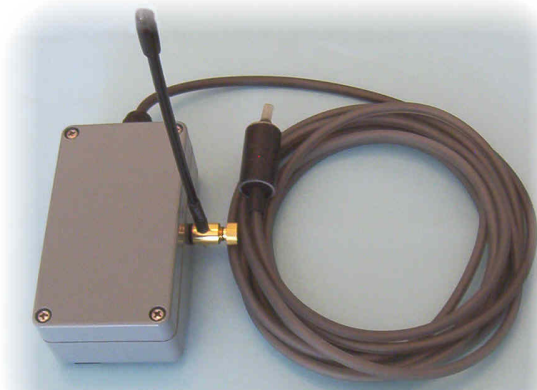


## AQUACHART PC SOFTWARE

Aquagauge™ AG-RFLCD models purchased with the optional PC-SERIAL package can be linked directly to a PC with the supplied cable. This allows the user to collect, save and display data. The software is provided on CD and enables continuous digital chart recording of water level and temperature. The displayed data can be rescaled during collection and the sample interval may be varied between a few seconds and several hours. The PC operating system must be Windows 95 or higher.



## AQUAGAUGE DIFFERENTIAL PRESSURE WATER LEVEL DATA LOGGER



A temperature-compensated differential pressure sensor with vent tube enables water level to be measured and logged at user defined intervals. Variations in atmospheric pressure are cancelled out and level is determined to a resolution of 3mm \*. A range of pressure sensors is available to cover a range of depths up to 30 meters. Battery life (4xAA) is at least 1 year and sealed electronics allows long term un-supervised remote monitoring in harsh conditions. RF output can be used with an optional receiver/display unit to observe water level in real time every 10 seconds.

\* 2.5 m depth (1mm resolution possible).